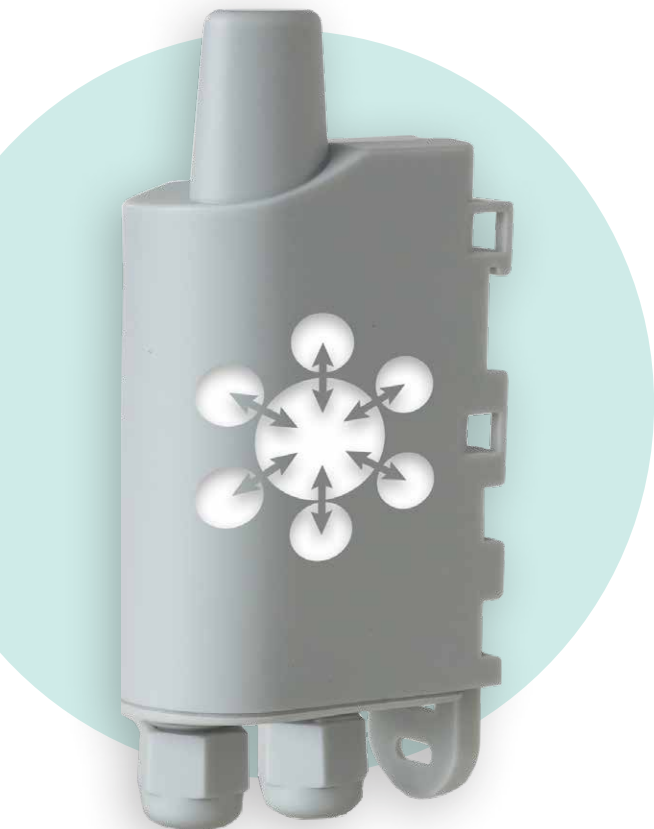


# MODBUS

Query, write and read one or more registers on one or more Modbus slaves.



**ALERT**

Report faults and alerts from MODBUS slaves :

- Min/max thresholds



**MEASURE**

Provide feedback about measuring data from Modbus slaves



**ACT**

- Read a slave's registers from the network
- Write to a slave's registry from the network



#### Additional features:

- Periodic/event transmission (up to 6 frames with different frequencies)
- Slave management: read and write
- Error/fault management: product error warning, configuration error
- Alarm repetition in case of persistent event
- Indicator lights for installation assistance
- Network Quality Test at start-up (LoRaWAN)



Make your thermal energy meters communicate.



Broadcast information on PLC.

# TECHNICAL SPECIFICATIONS



## LoRaWAN ARF8240AA | Sigfox ARF8240CA

### Mechanical specifications

Weight	97 g
Dimensions	105 x 50 x 27 mm
Enclosure	IP67, EMERGE™ PC 8731HH grey resin (casing), EMERGE™ PC 8430-15 transparent resin (sole)
Mounting	DIN Rail, Tube, Wall, Collar
Cable length	2 cable of 6 wires (70 cm + 10 stripped wire)
Modbus Protocol	Remote Terminal Unit (RTU)

### Operating conditions

Temperature	-25°C / +70°C
Humidity	0 to 85% RH (non-condensing)

### Device Power Supply

Alimentation	External supply 6-30V continuous
Slave supply management	Monitor the supply of the slave
Current max returned to the sensor	500 mA

### Device configuration

Local device configuration	IoT Configurator
Test Read and Write into slaves	Advanced mode of the IoT Configuration
Configuration and firmware update from the air	KARE+ compatible
Remote device configuration	Downlink via the network or via the KARE platform
Security	PIN/PUK Code protection

### Radio/Wireless

Supported regions	LoRaWAN EU863-870 / Sigfox RC1
Wireless Security	AES-128 data encryption (LoRaWAN only)
Class	LoRaWAN: Class A or C   Sigfox: Class 0
Supported LoRaWAN features	OTAA, ABP, ADR, adaptive channel setup
RF transmit power	14 dBm
Sensitivity	-137 dBm LoRaWAN @SF12 -124 dBm Sigfox

### Regulations and certifications

Standard	Directive 2014/53/UE (RED)
----------	----------------------------

### RS232 Link

Signals	RX, TX, Ground (RTC and CTS are not handled)
Voltage of inputs/outputs	+/- 5V typ, +/- 15V max

### RS485 Link

Signals	TX-, RX-, RX+; TX+, Ground
Voltages on inputs/outputs	+/- 1.5V typ, 3V differential
Polarization resistors	560 Ohms
Termination resistor	120 Ohms

